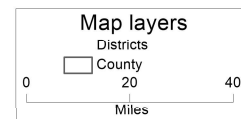
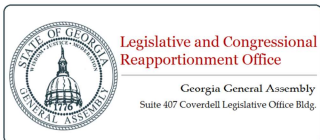
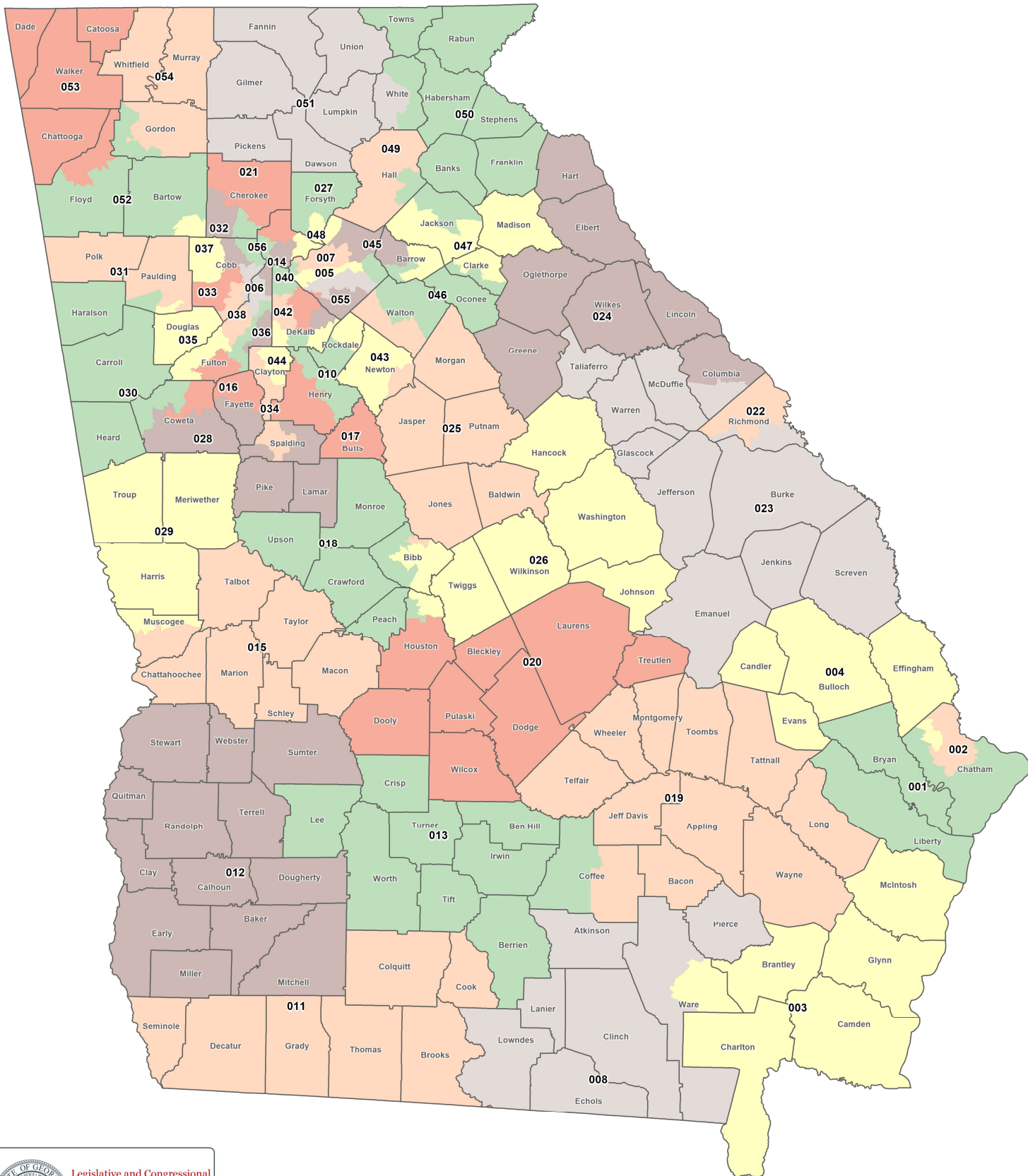


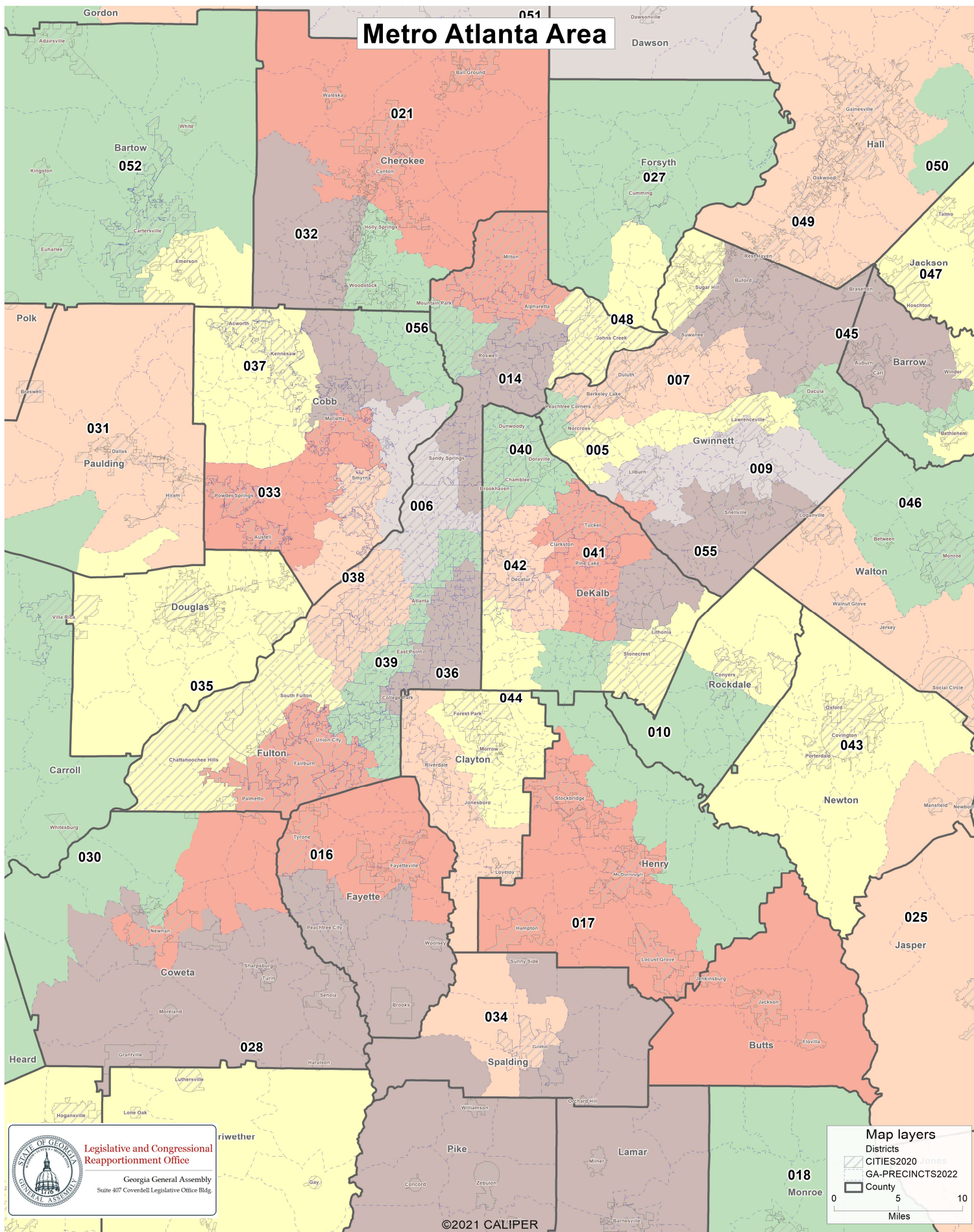
Proposed Georgia Senate Districts

Client: S055
Plan: GSDC-SenatePlan-2023
Type: Senate



Proposed Georgia Senate Districts

Client: S055
Plan: GSDC-SenatePlan-2023
Type: Senate

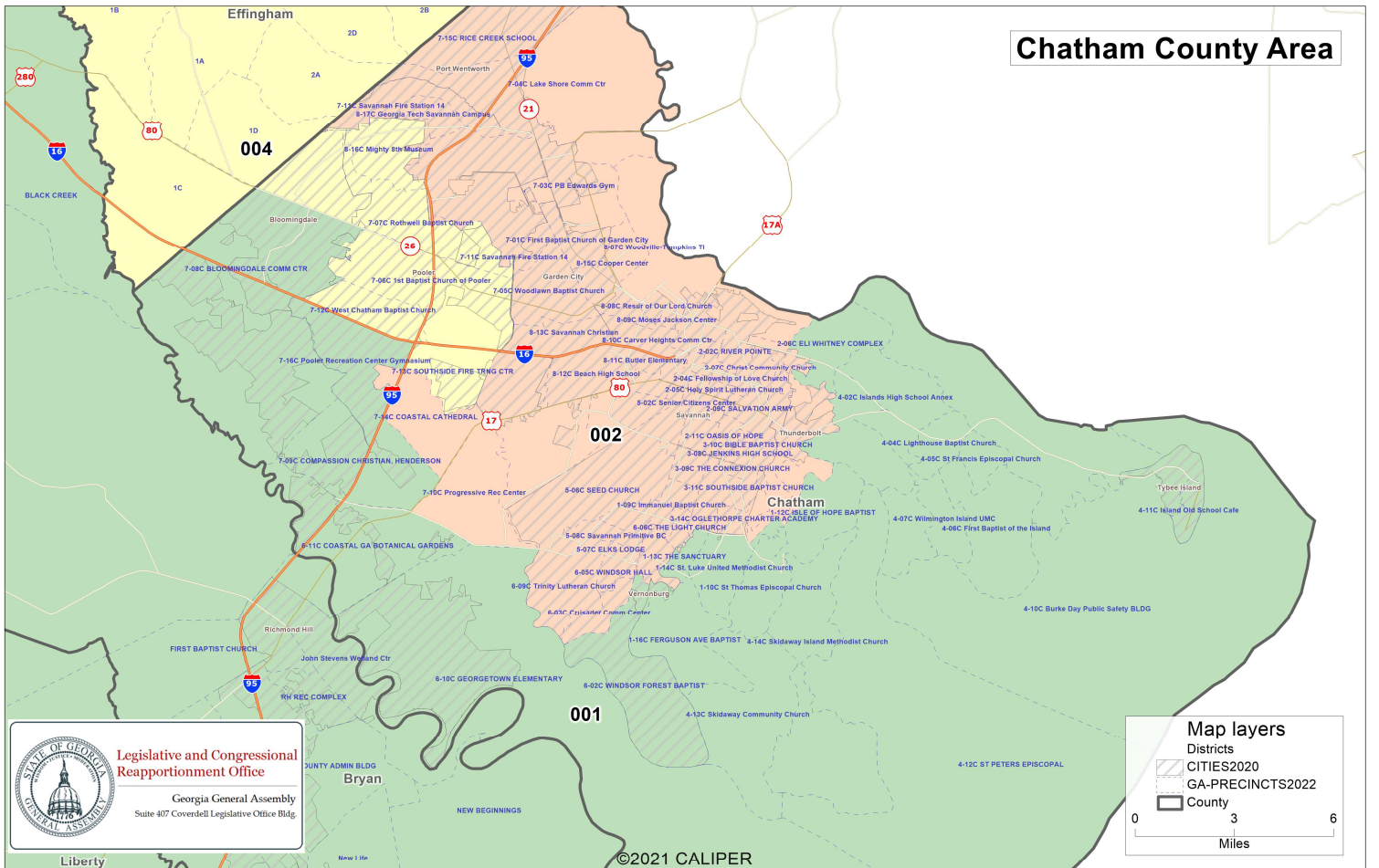
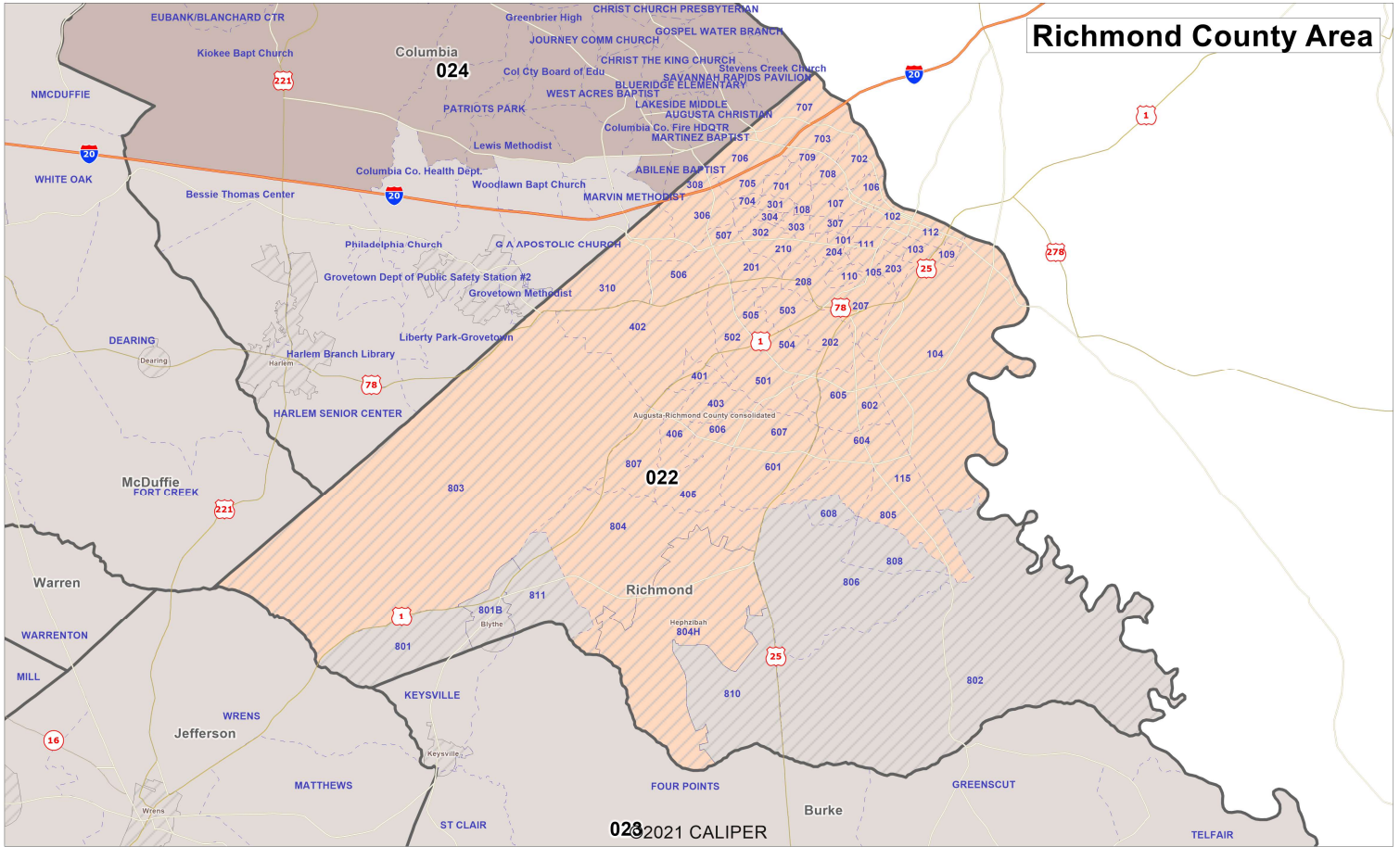


Legislative and Congressional
Reapportionment Office

Georgia General Assembly
Suite 407 Coverdell Legislative Office Bldg.

Proposed Georgia Senate Districts

Client: S055
Plan: GSDC-SenatePlan-2023
Type: Senate



Legislative and Congressional Reapportionment Office
Georgia General Assembly
Suite 407 Coverdell Legislative Office Bldg.

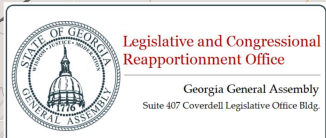
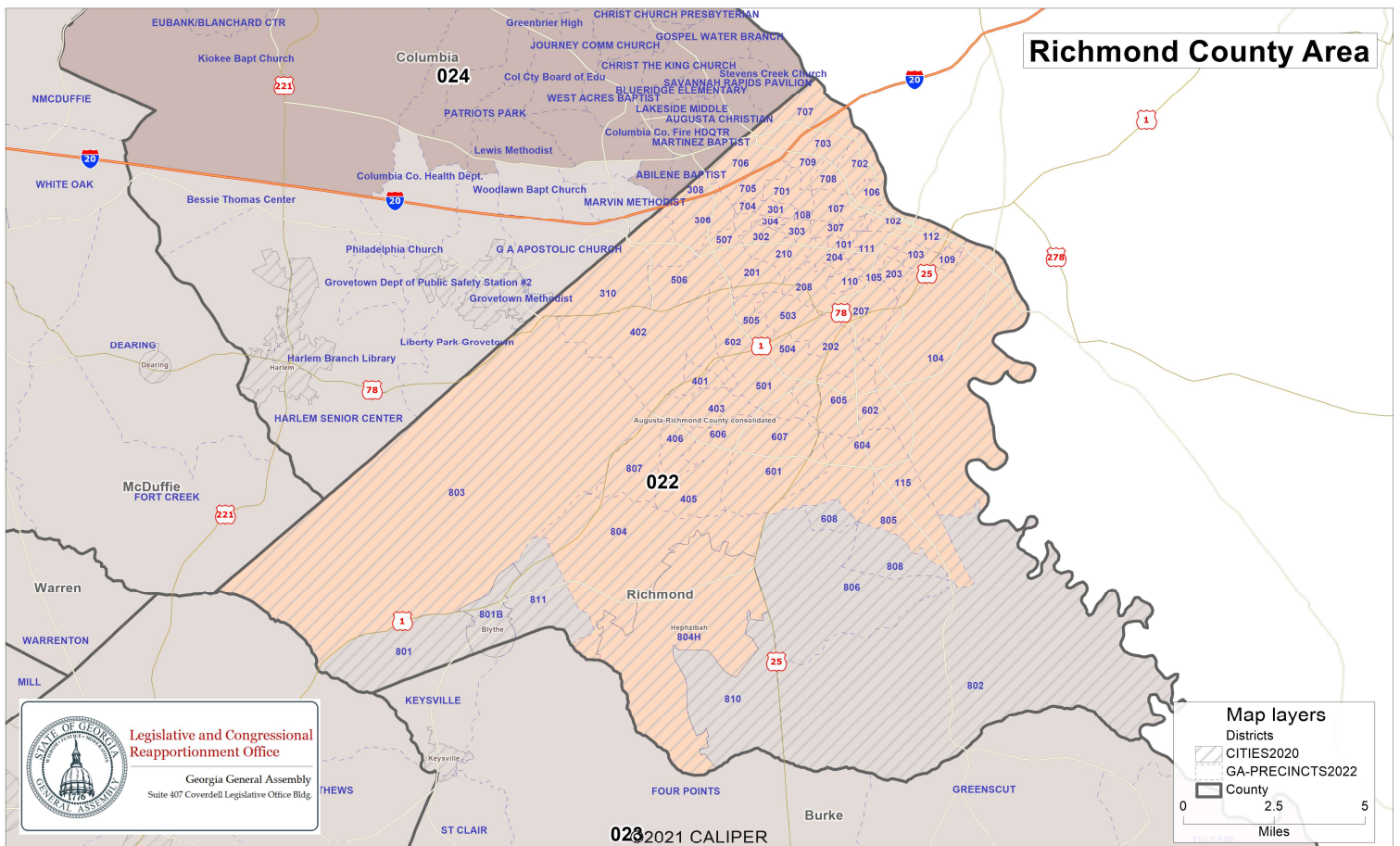
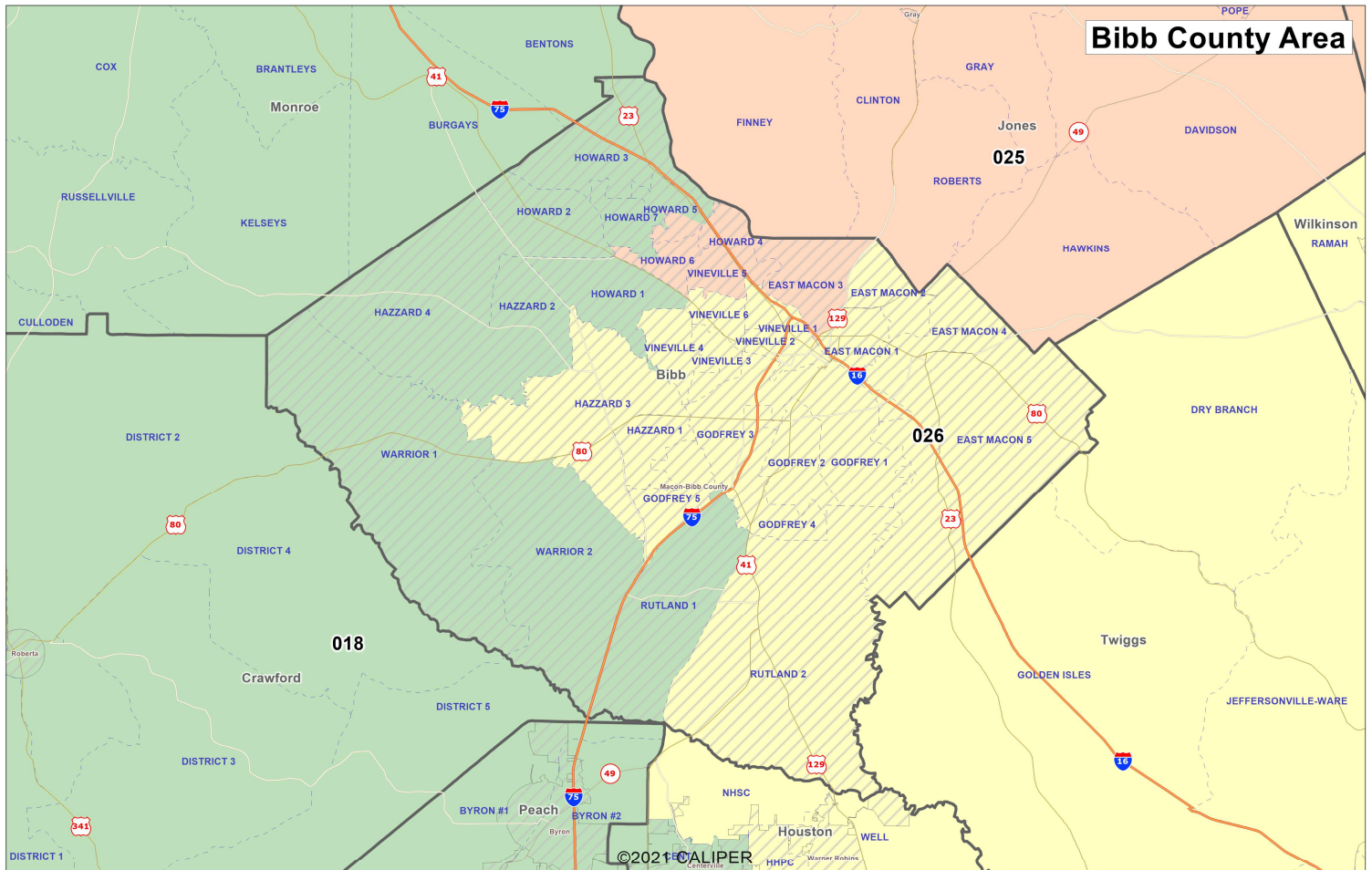
Map layers

- Districts
- CITIES2020
- GA-PRECINCTS2022
- County

0 3 6
Miles

Proposed Georgia Senate Districts

Client: S055
Plan: GSDC-SenatePlan-2023
Type: Senate



Population Summary

District	Population	Deviation	% Devn.	[18+_Pop]	[% 18+_Pop]	[% NH_Wht]	[% NH_Blkl]	[% Hispanic Origin]	[% NH_Asn]	[% NH_Ind]	[% NH_Hwn]	[% NH_Oth]	[% NH_2+ Races]
001	191,402	118	0.06%	145,428	75.98%	58.9%	23.66%	8.78%	2.64%	0.25%	0.3%	0.48%	6.56%
002	190,408	-876	-0.46%	150,843	79.22%	36.4%	47.51%	8.36%	3.4%	0.21%	0.15%	0.46%	4.41%
003	191,212	-72	-0.04%	148,915	77.88%	66.23%	20.92%	6.82%	1.22%	0.26%	0.09%	0.42%	5.19%
004	191,098	-186	-0.10%	146,443	76.63%	64.48%	22.6%	6.49%	1.86%	0.23%	0.07%	0.38%	5.08%
005	191,921	637	0.33%	139,394	72.63%	13.35%	26.84%	45.47%	10.98%	0.15%	0.04%	0.64%	3.47%
006	191,401	117	0.06%	155,781	81.39%	56.41%	21.47%	9.18%	7.21%	0.16%	0.03%	1.11%	5.44%
007	189,709	-1,575	-0.82%	147,425	77.71%	35.09%	20.08%	18.57%	21.67%	0.16%	0.04%	0.66%	4.79%
008	192,396	1,112	0.58%	145,144	75.44%	57.39%	30.03%	7.28%	1.21%	0.28%	0.07%	0.35%	4.5%
009	192,915	1,631	0.85%	142,054	73.64%	32.04%	28.46%	21.09%	13.98%	0.18%	0.03%	0.72%	4.73%
010	191,788	504	0.26%	147,416	76.86%	28.3%	60.69%	5.18%	1.44%	0.16%	0.04%	0.66%	4.6%
011	189,976	-1,308	-0.68%	144,597	76.11%	55.75%	31.13%	9.36%	0.69%	0.23%	0.03%	0.26%	3.33%
012	190,819	-465	-0.24%	149,154	78.17%	33.83%	58.82%	3.89%	0.86%	0.16%	0.02%	0.21%	2.82%
013	189,326	-1,958	-1.02%	144,141	76.13%	61.25%	27.08%	7.2%	1.2%	0.17%	0.02%	0.26%	3.69%
014	192,533	1,249	0.65%	155,340	80.68%	54.63%	16.79%	13.97%	9.46%	0.13%	0.04%	0.79%	5.2%
015	189,446	-1,838	-0.96%	144,506	76.28%	34.07%	52.31%	7.57%	1.31%	0.23%	0.27%	0.44%	4.97%
016	189,834	-1,450	-0.76%	144,220	75.97%	34.01%	50.76%	8.43%	2.47%	0.19%	0.04%	0.64%	4.57%
017	192,137	853	0.45%	144,538	75.23%	34.01%	50.17%	7.61%	3.51%	0.19%	0.05%	0.7%	4.99%
018	191,825	541	0.28%	150,196	78.3%	58.41%	30.01%	5.18%	2.42%	0.22%	0.03%	0.4%	4.25%
019	192,316	1,032	0.54%	146,131	75.98%	61.67%	24.76%	9.72%	0.58%	0.17%	0.06%	0.27%	3.64%
020	192,588	1,304	0.68%	147,033	76.35%	59.74%	30.65%	4.21%	1.73%	0.15%	0.05%	0.31%	4.14%
021	192,572	1,288	0.67%	145,120	75.36%	71.13%	6.52%	10.13%	7.38%	0.19%	0.04%	0.53%	5.41%
022	193,163	1,879	0.98%	150,450	77.89%	31.1%	56.58%	5.63%	1.97%	0.24%	0.18%	0.44%	4.96%
023	190,344	-940	-0.49%	144,113	75.71%	54.27%	34.66%	5.46%	1.16%	0.24%	0.1%	0.34%	4.99%
024	192,674	1,390	0.73%	148,602	77.13%	67.45%	18.98%	5.4%	3.31%	0.18%	0.09%	0.43%	5.38%
025	192,290	1,006	0.53%	149,880	77.94%	64.43%	26.62%	4.22%	1.04%	0.17%	0.04%	0.41%	3.94%
026	189,945	-1,339	-0.70%	145,744	76.73%	33.26%	57.37%	4.85%	0.83%	0.21%	0.04%	0.31%	4.09%
027	190,676	-608	-0.32%	139,196	73%	68%	4.31%	11.61%	11.41%	0.18%	0.04%	0.52%	5.4%
028	192,945	1,661	0.87%	148,335	76.88%	74.22%	12.73%	5.6%	2.94%	0.17%	0.02%	0.47%	5%
029	189,424	-1,860	-0.97%	145,674	76.9%	60.71%	26.22%	5.34%	3.02%	0.23%	0.1%	0.42%	5.16%
030	190,291	-993	-0.52%	145,292	76.35%	73.45%	14.57%	6.34%	0.88%	0.22%	0.03%	0.39%	5.41%
031	192,560	1,276	0.67%	142,251	73.87%	65.2%	19.83%	8.85%	1.07%	0.23%	0.06%	0.58%	5.67%
032	192,448	1,164	0.61%	149,879	77.88%	63.13%	13.22%	12.09%	5.49%	0.2%	0.04%	0.91%	6.31%
033	192,694	1,410	0.74%	146,415	75.98%	26%	40.48%	26.72%	2.13%	0.19%	0.05%	0.86%	4.69%
034	193,162	1,878	0.98%	143,453	74.27%	12.52%	71.51%	10.1%	2.31%	0.2%	0.05%	0.58%	3.68%
035	190,778	-506	-0.26%	143,484	75.21%	31.79%	52.73%	9.38%	1.3%	0.22%	0.06%	0.71%	5.08%
036	192,282	998	0.52%	161,385	83.93%	33.1%	51.35%	7.56%	3.58%	0.17%	0.04%	0.53%	4.38%
037	192,671	1,387	0.73%	147,779	76.7%	62.38%	18.04%	9.99%	3.85%	0.16%	0.03%	0.78%	6.21%
038	193,155	1,871	0.98%	148,367	76.81%	20.03%	62.74%	9.72%	3.42%	0.18%	0.04%	0.58%	4.29%
039	191,500	216	0.11%	156,022	81.47%	25.32%	60.33%	6.1%	4.25%	0.16%	0.04%	0.57%	3.96%

District	Population	Deviation	% Devn.	[18+_Pop]	[% 18+_Pop]	[% NH_Wht]	[% NH_Blk]	[% Hispanic Origin]	[% NH_Asn]	[% NH_Ind]	[% NH_Hwn]	[% NH_Oth]	[% NH_2+ Races]
040	190,544	-740	-0.39%	147,000	77.15%	43.69%	16.42%	24.81%	10.84%	0.12%	0.04%	0.65%	4.44%
041	191,023	-261	-0.14%	145,278	76.05%	18.86%	60.28%	7.32%	9.19%	0.22%	0.02%	0.64%	4.57%
042	190,940	-344	-0.18%	153,952	80.63%	49.91%	28.14%	10.13%	6.81%	0.13%	0.03%	0.61%	5.26%
043	193,083	1,799	0.94%	145,180	75.19%	28.37%	58.99%	7.52%	0.84%	0.16%	0.08%	0.6%	4.59%
044	190,259	-1,025	-0.54%	144,138	75.76%	12.81%	64.16%	14.22%	5.22%	0.19%	0.03%	0.57%	3.69%
045	190,692	-592	-0.31%	140,706	73.79%	52.74%	17.12%	14.66%	10.69%	0.13%	0.03%	0.62%	5.44%
046	190,312	-972	-0.51%	146,713	77.09%	67.24%	16.64%	7.99%	3.77%	0.2%	0.03%	0.58%	4.62%
047	190,607	-677	-0.35%	146,599	76.91%	64.67%	16.96%	11.22%	2.66%	0.16%	0.04%	0.58%	4.82%
048	190,123	-1,161	-0.61%	136,995	72.06%	49.01%	8.35%	7.58%	30.59%	0.13%	0.04%	0.55%	5.21%
049	189,355	-1,929	-1.01%	144,123	76.11%	60.85%	7.13%	26.24%	2.15%	0.15%	0.04%	0.35%	4.05%
050	189,320	-1,964	-1.03%	148,799	78.6%	78.61%	5.05%	11.08%	1.22%	0.22%	0.04%	0.26%	4.48%
051	190,167	-1,117	-0.58%	155,571	81.81%	88.75%	0.84%	5.43%	0.59%	0.31%	0.02%	0.3%	4.6%
052	190,799	-485	-0.25%	146,620	76.85%	71.8%	12.39%	10.11%	1.08%	0.21%	0.03%	0.35%	5.23%
053	190,236	-1,048	-0.55%	148,201	77.9%	85.78%	4.46%	3.98%	1%	0.24%	0.06%	0.3%	5.37%
054	192,443	1,159	0.61%	143,843	74.75%	65.71%	2.97%	26.66%	1.14%	0.19%	0.02%	0.25%	4.11%
055	190,155	-1,129	-0.59%	141,968	74.66%	18.09%	62.96%	10.14%	4.19%	0.17%	0.04%	0.73%	4.92%
056	191,226	-58	-0.03%	144,448	75.54%	73.9%	6.36%	8.63%	5.67%	0.11%	0.03%	0.75%	6.04%

Total: 10,711,908

Ideal District: 191,284

Summary Statistics:

Population Range:	189,320 to 193,163
Ratio Range:	0.02
Absolute Range:	-1,964 to 1,879
Absolute Overall Range:	3,843
Relative Range:	-1.03% to 0.98%
Relative Overall Range:	2.01%
Absolute Mean Deviation:	1,052.79
Relative Mean Deviation:	0.55%
Standard Deviation:	1,187.50

Population Summary

District	Population	Deviation	% Devn.	[18+_Pop]	[% 18+_Pop]	[% NH18+_Wht]	[% NH18+_Blk]	[% H18+_Pop]	[% NH18+_Asn]	[% NH18+_Ind]	[% NH18+_Hwn]	[% NH18+_Oth]	[% NH18+_2+ Races]
001	191,402	118	0.06%	145,428	75.98%	61.99%	22.8%	7.55%	2.81%	0.28%	0.27%	0.4%	3.9%
002	190,408	-876	-0.46%	150,843	79.22%	40.21%	44.81%	7.48%	3.77%	0.22%	0.15%	0.42%	2.95%
003	191,212	-72	-0.04%	148,915	77.88%	68.88%	19.81%	6.17%	1.27%	0.27%	0.08%	0.34%	3.19%
004	191,098	-186	-0.10%	146,443	76.63%	66.78%	21.98%	5.52%	1.9%	0.24%	0.07%	0.33%	3.17%
005	191,921	637	0.33%	139,394	72.63%	15.69%	27.21%	41.67%	12.41%	0.14%	0.04%	0.55%	2.28%
006	191,401	117	0.06%	155,781	81.39%	57.79%	21.79%	8.24%	7.14%	0.16%	0.03%	1.05%	3.8%
007	189,709	-1,575	-0.82%	147,425	77.71%	37.84%	19.33%	16.56%	22.58%	0.16%	0.05%	0.55%	2.93%
008	192,396	1,112	0.58%	145,144	75.44%	60.1%	29.02%	6.21%	1.27%	0.29%	0.08%	0.27%	2.75%
009	192,915	1,631	0.85%	142,054	73.64%	35.81%	27.23%	18.77%	14.59%	0.18%	0.04%	0.59%	2.8%
010	191,788	504	0.26%	147,416	76.86%	30.04%	60.27%	4.34%	1.49%	0.17%	0.04%	0.59%	3.06%
011	189,976	-1,308	-0.68%	144,597	76.11%	58.97%	30.08%	7.6%	0.72%	0.26%	0.02%	0.22%	2.13%
012	190,819	-465	-0.24%	149,154	78.17%	36.71%	56.63%	3.48%	0.92%	0.18%	0.02%	0.18%	1.88%
013	189,326	-1,958	-1.02%	144,141	76.13%	64.1%	26.01%	6.01%	1.21%	0.17%	0.02%	0.21%	2.26%
014	192,533	1,249	0.65%	155,340	80.68%	57.1%	16.83%	12.13%	9.43%	0.12%	0.05%	0.74%	3.61%
015	189,446	-1,838	-0.96%	144,506	76.28%	36.52%	51.56%	6.59%	1.45%	0.23%	0.25%	0.36%	3.04%
016	189,834	-1,450	-0.76%	144,220	75.97%	36.77%	49.66%	7.35%	2.57%	0.19%	0.05%	0.57%	2.85%
017	192,137	853	0.45%	144,538	75.23%	37.14%	48.64%	6.71%	3.59%	0.2%	0.06%	0.61%	3.04%
018	191,825	541	0.28%	150,196	78.3%	60.69%	29.2%	4.51%	2.46%	0.22%	0.03%	0.29%	2.6%
019	192,316	1,032	0.54%	146,131	75.98%	63.99%	24.52%	8.38%	0.62%	0.18%	0.06%	0.2%	2.06%
020	192,588	1,304	0.68%	147,033	76.35%	61.71%	30.17%	3.49%	1.76%	0.16%	0.05%	0.25%	2.41%
021	192,572	1,288	0.67%	145,120	75.36%	73.87%	6.37%	8.77%	6.98%	0.18%	0.04%	0.48%	3.32%
022	193,163	1,879	0.98%	150,450	77.89%	34.38%	53.94%	5.35%	2.3%	0.24%	0.18%	0.38%	3.24%
023	190,344	-940	-0.49%	144,113	75.71%	56.89%	33.91%	4.52%	1.24%	0.25%	0.09%	0.27%	2.84%
024	192,674	1,390	0.73%	148,602	77.13%	69.81%	18.69%	4.4%	3.27%	0.2%	0.07%	0.35%	3.2%
025	192,290	1,006	0.53%	149,880	77.94%	66.64%	25.83%	3.47%	1.05%	0.18%	0.03%	0.36%	2.44%
026	189,945	-1,339	-0.70%	145,744	76.73%	36.6%	55.18%	4.24%	0.92%	0.22%	0.03%	0.24%	2.56%
027	190,676	-608	-0.32%	139,196	73%	71.5%	4.16%	10.2%	10.27%	0.15%	0.04%	0.45%	3.22%
028	192,945	1,661	0.87%	148,335	76.88%	76.06%	12.66%	4.81%	2.78%	0.18%	0.02%	0.38%	3.1%
029	189,424	-1,860	-0.97%	145,674	76.9%	63.22%	25.52%	4.45%	3%	0.23%	0.11%	0.33%	3.13%
030	190,291	-993	-0.52%	145,292	76.35%	75.41%	14.47%	5.32%	0.9%	0.24%	0.03%	0.3%	3.34%
031	192,560	1,276	0.67%	142,251	73.87%	68.26%	19.13%	7.42%	1.12%	0.22%	0.06%	0.46%	3.33%
032	192,448	1,164	0.61%	149,879	77.88%	65.78%	13.13%	10.55%	5.42%	0.2%	0.04%	0.83%	4.05%
033	192,694	1,410	0.74%	146,415	75.98%	30.25%	40.26%	22.93%	2.35%	0.22%	0.05%	0.81%	3.14%
034	193,162	1,878	0.98%	143,453	74.27%	14.53%	70.97%	8.8%	2.57%	0.2%	0.04%	0.54%	2.34%
035	190,778	-506	-0.26%	143,484	75.21%	34.91%	51.67%	7.95%	1.39%	0.23%	0.06%	0.61%	3.17%
036	192,282	998	0.52%	161,385	83.93%	36.18%	48.68%	7.06%	4.01%	0.17%	0.04%	0.51%	3.34%
037	192,671	1,387	0.73%	147,779	76.7%	65.37%	17.41%	8.69%	3.94%	0.17%	0.04%	0.67%	3.73%
038	193,155	1,871	0.98%	148,367	76.81%	21.87%	62.45%	8.44%	3.55%	0.18%	0.04%	0.56%	2.92%

Population Summary

District	Population	Deviation	% Devn.	[18+_Pop]	[% 18+_Pop]	[% NH18+_Wht]	[% NH18+_Blk]	[% H18+_Pop]	[% NH18+_Asn]	[% NH18+_Ind]	[% NH18+_Hwn]	[% NH18+_Oth]	[% NH18+_ 2+ Races]
039	191,500	216	0.11%	156,022	81.47%	27.87%	57.97%	5.65%	4.83%	0.15%	0.04%	0.5%	2.98%
040	190,544	-740	-0.39%	147,000	77.15%	46.34%	17.32%	21.62%	11.15%	0.11%	0.04%	0.59%	2.84%
041	191,023	-261	-0.14%	145,278	76.05%	21.39%	59.67%	6.68%	8.42%	0.22%	0.02%	0.6%	3.01%
042	190,940	-344	-0.18%	153,952	80.63%	51.39%	28.73%	8.64%	7.16%	0.12%	0.03%	0.53%	3.4%
043	193,083	1,799	0.94%	145,180	75.19%	30.97%	57.99%	6.38%	0.89%	0.15%	0.06%	0.52%	3.02%
044	190,259	-1,025	-0.54%	144,138	75.76%	15.17%	63.9%	12.17%	5.54%	0.18%	0.04%	0.5%	2.5%
045	190,692	-592	-0.31%	140,706	73.79%	55.47%	16.86%	13.05%	10.89%	0.13%	0.03%	0.5%	3.07%
046	190,312	-972	-0.51%	146,713	77.09%	69.9%	15.64%	6.99%	3.85%	0.22%	0.02%	0.5%	2.89%
047	190,607	-677	-0.35%	146,599	76.91%	67.46%	16.34%	9.57%	2.79%	0.17%	0.04%	0.5%	3.13%
048	190,123	-1,161	-0.61%	136,995	72.06%	52.25%	8.26%	7%	29.05%	0.11%	0.04%	0.47%	2.83%
049	189,355	-1,929	-1.01%	144,123	76.11%	65.64%	7.12%	21.9%	2.22%	0.16%	0.04%	0.29%	2.63%
050	189,320	-1,964	-1.03%	148,799	78.6%	81.54%	5.03%	8.78%	1.24%	0.24%	0.03%	0.24%	2.91%
051	190,167	-1,117	-0.58%	155,571	81.81%	90.24%	0.84%	4.34%	0.61%	0.33%	0.02%	0.27%	3.34%
052	190,799	-485	-0.25%	146,620	76.85%	74.74%	12.08%	8.24%	1.13%	0.22%	0.02%	0.29%	3.27%
053	190,236	-1,048	-0.55%	148,201	77.9%	87.31%	4.49%	3.23%	0.99%	0.26%	0.06%	0.22%	3.44%
054	192,443	1,159	0.61%	143,843	74.75%	69.98%	3.07%	22.64%	1.15%	0.22%	0.02%	0.21%	2.71%
055	190,155	-1,129	-0.59%	141,968	74.66%	20.56%	62.42%	8.71%	4.24%	0.18%	0.04%	0.67%	3.18%
056	191,226	-58	-0.03%	144,448	75.54%	76.17%	6.37%	7.66%	5.51%	0.12%	0.03%	0.63%	3.51%

Total: 10,711,908
Ideal District: 191,284

Summary Statistics:

Population Range:	189,320 to 193,163
Ratio Range:	0.02
Absolute Range:	-1,964 to 1,879
Absolute Overall Range:	3,843
Relative Range:	-1.03% to 0.98%
Relative Overall Range:	2.01%
Absolute Mean Deviation:	1,052.79
Relative Mean Deviation:	0.55%
Standard Deviation:	1,187.50